



Foreign Exchange and Financial Markets in November 2010

EUR/USD 1.3889 ↓ 1.2977		USD/MDL 11.7400 ↑ 12.1875	
▼ -6.5663%		▲ 3.8118%	
Max. 1.4198 - 04.11.2010 Min. 1.2977 - 30.11.2010		Max. 12.2125 - 29.11.2010 Min. 11.4556 - 08.11.2010	
GBP/USD 1.6035 ↓ 1.5551		USD/RUB 30.7890 ↑ 31.5316	
▼ -3.0184%		▲ 2.4119%	
Max. 1.6263 - 04.11.2010 Min. 1.5551 - 30.11.2010		Max. 31.5316 - 30.11.2010 Min. 30.6307 - 11.11.2010	
USD/CHF 0.9915 ↑ 1.0041		USD/RON 3.0744 ↑ 3.3084	
▲ 1.2708%		▲ 7.6112%	
Max. 1.0041 - 30.11.2010 Min. 0.9588 - 04.11.2010		Max. 3.3084 - 30.11.2010 Min. 3.0205 - 04.11.2010	
USD/JPY 80.48 ↑ 83.67		USD/UAH 7.9480 ↑ 7.9640	
▲ 3.9637%		▲ 0.2013%	
Max. 84.21 - 29.11.2010 Min. 80.48 - 01.11.2010		Max. 7.9650 - 26.11.2010 Min. 7.9425 - 17.11.2010	
Dow Jones* 11124.62 ↓ 11006.02		DAX* 6604.86 ↑ 6688.49	
▼ -1.0661%		▲ 1.2662%	
Max. 11444.08 - 05.11.2010 Min. 11006.02 - 30.11.2010		Max. 6879.66 - 25.11.2010 Min. 6604.86 - 01.11.2010	
Nikkei* 9154.72 ↑ 9937.04		FTSE* 5694.62 ↓ 5528.27	
▲ 8.5455%		▼ -2.9212%	
Max. 10125.99 - 29.11.2010 Min. 9154.72 - 01.11.2010		Max. 5875.35 - 05.11.2010 Min. 5528.27 - 30.11.2010	
<i>Source: Reuters</i> <i>* Daily close values</i>			



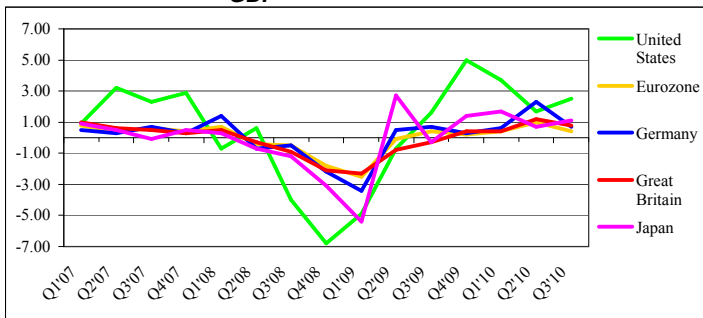
Foreign Exchange and Financial Markets in November 2010

Economic indicators (%)

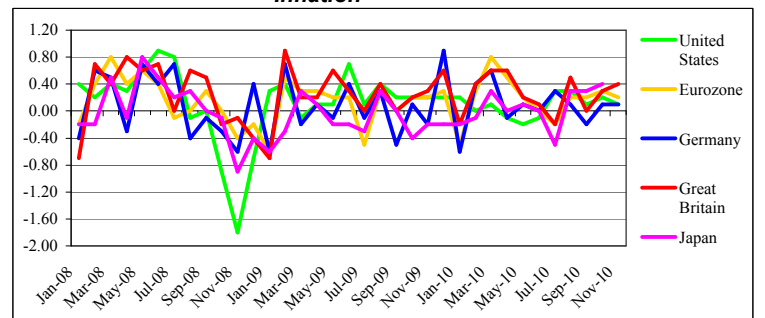
	GDP (modification)			Inflation (modification)			Unemployment rate			Industrial Product (modification)		
	Q1'10	Q2'10	Q3'10	September '10	October '10	November '10	September '10	October '10	November '10	September '10	October '10	November '10
United States *	3.7	1.7	2.5	0.1	0.2	0.1	9.6	9.6	9.8	0.1	-0.2	0.4
Eurozone	0.4	1.0	0.4	0.2	0.3	0.2	10.0	10.1	n/a	-0.8	0.7	n/a
Germany	0.6	2.3	0.7	-0.2	0.1	0.1	6.7	6.7	n/a	-1.0	2.9	n/a
Great Britain	0.4	1.2	0.8	0.0	0.3	0.4	7.7	7.9	n/a	0.4	-0.2	n/a
Japan	1.7	0.7	1.1	0.3	0.4	n/a	5.0	5.1	n/a	-1.6	-2.0	n/a

* United States GDP annual rates

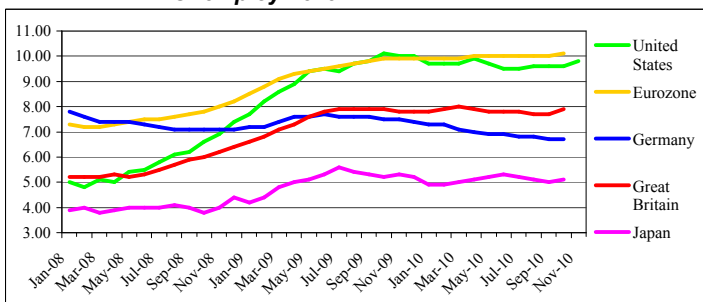
GDP



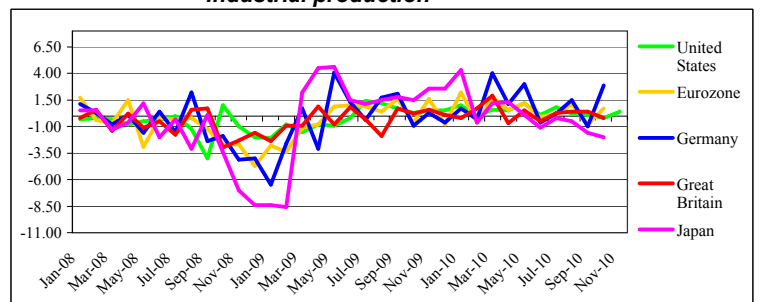
Inflation



Unemployment



Industrial production



Forex Trends (US Dollars against major currencies at the end of the month)

	June 2010	July 2010	August 2010	September 2010	October 2010	November 2010
EUR/USD	1.2234	1.3045	1.2685	1.3630	1.3947	1.2977
GBP/USD	1.4947	1.5682	1.5349	1.5711	1.6038	1.5551
USD/CHF	1.0770	1.0413	1.0140	0.9821	0.9820	1.0041
USD/JPY	88.39	86.45	84.16	83.45	80.39	83.67

Indices (value at the end of the month) *

	September 2010	October 2010	November 2010	TREND	Modification	%
DAX	6229.02	6601.37	6688.49	↑	87.12	1.32
FTSE 100	5548.62	5675.16	5528.27	↓	-146.89	-2.59
Dow Jones	10788.05	11118.49	11006.02	↓	-112.47	-1.01
Nikkei 225	9369.35	9202.45	9937.04	↑	734.59	7.98

* Daily close values

Source: Bloomberg.