

**Foreign Exchange and Financial Markets in September 2010**

<b>EUR/USD</b> <b>1.2811</b> ↑ <b>1.3630</b>		<b>USD/MDL</b> <b>12.1250</b> ↓ <b>11.8000</b>	
▲ <b>6.3929%</b>		▼ <b>-2.6804%</b>	
Max. 1.3630 - 30.09.2010		Max. 12.3900 - 10.09.2010	
Min. 1.2677 - 10.09.2010		Min. 11.8000 - 30.09.2010	
<b>GBP/USD</b> <b>1.5454</b> ↑ <b>1.5711</b>		<b>USD/RUB</b> <b>30.7090</b> ↓ <b>30.5814</b>	
▲ <b>1.6630%</b>		▼ <b>-0.4155%</b>	
Max. 1.5827 - 27.09.2010		Max. 31.2170 - 16.09.2010	
Min. 1.5348 - 10.09.2010		Min. 30.4000 - 28.09.2010	
<b>USD/CHF</b> <b>1.0150</b> ↓ <b>0.9821</b>		<b>USD/RON</b> <b>3.3273</b> ↓ <b>3.1264</b>	
▼ <b>-3.2414%</b>		▼ <b>-6.0379%</b>	
Max. 1.0193 - 10.09.2010		Max. 3.3763 - 07.09.2010	
Min. 0.9760 - 28.09.2010		Min. 3.1264 - 30.09.2010	
<b>USD/JPY</b> <b>84.42</b> ↓ <b>83.45</b>		<b>USD/UAH</b> <b>7.8870</b> ↑ <b>7.9300</b>	
▼ <b>-1.1490%</b>		▲ <b>0.5452%</b>	
Max. 85.84 - 17.09.2010		Max. 7.9400 - 07.09.2010	
Min. 83.05 - 14.09.2010		Min. 7.8870 - 01.09.2010	
<b>Dow Jones*</b> <b>10269.47</b> ↑ <b>10788.05</b>		<b>DAX*</b> <b>6083.90</b> ↑ <b>6229.02</b>	
▲ <b>5.0497%</b>		▲ <b>2.3853%</b>	
Max. 10860.26 - 24.09.2010		Max. 6298.30 - 24.09.2010	
Min. 10269.47 - 01.09.2010		Min. 6083.85 - 02.09.2010	
<b>Nikkei*</b> <b>8927.02</b> ↑ <b>9369.35</b>		<b>FTSE*</b> <b>5366.41</b> ↑ <b>5548.62</b>	
▲ <b>4.9550%</b>		▲ <b>3.3954%</b>	
Max. 9626.09 - 17.09.2010		Max. 5602.54 - 20.09.2010	
Min. 8927.02 - 01.09.2010		Min. 5366.41 - 01.09.2010	

Source: Reuters

\* Daily close values



**Foreign Exchange and Financial Markets in September 2010**

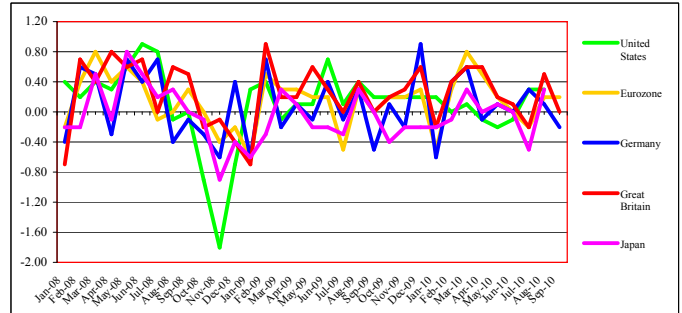
Economic indicators (%)												
	GDP (modification)			Inflation (modification)			Unemployment rate			Industrial Product (modification)		
	Q1'10	Q2'10	Q3'10	July '10	August '10	September '10	July '10	August '10	September '10	July '10	August '10	September '10
United States *	3.7	1.7	n/a	0.3	0.3	0.1	9.5	9.6	9.6	0.7	0.2	-0.2
Eurozone	0.3	1.0	n/a	-0.2	0.2	0.2	10.1	10.1	n/a	0.1	1.0	n/a
Germany	0.5	2.2	n/a	0.3	0.1	-0.2	6.9	6.8	n/a	0.1	1.7	n/a
Great Britain	0.4	1.2	n/a	-0.2	0.5	0.0	7.8	7.7	n/a	0.3	0.2	n/a
Japan	1.2	0.4	n/a	-0.5	0.3	n/a	5.2	5.1	n/a	-0.2	-0.5	n/a

\* United States GDP annual rates

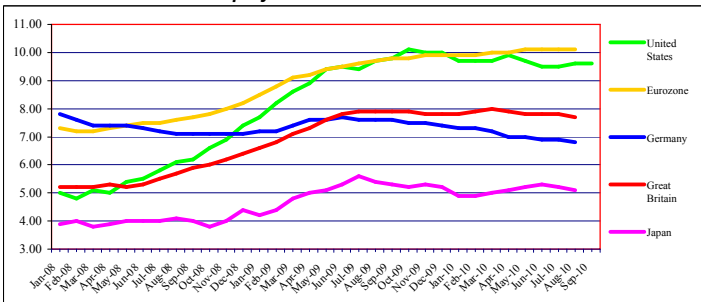
**GDP**



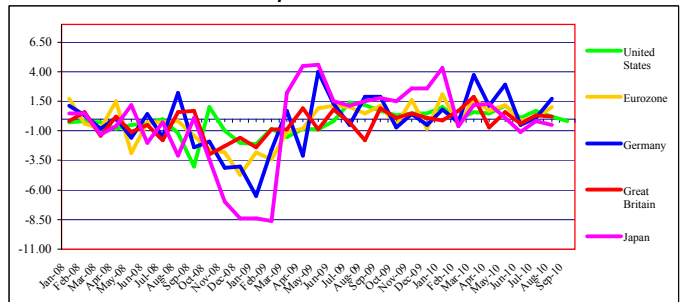
**Inflation**



**Unemployment**



**Industrial production**



**Forex Trends (US Dollars against major currencies at the end of the month)**

	April 2010	May 2010	June 2010	July 2010	August 2010	September 2010
EUR/USD	1.3295	1.2305	1.2234	1.3045	1.2685	1.3630
GBP/USD	1.5268	1.4537	1.4947	1.5682	1.5349	1.5711
USD/CHF	1.0773	1.1548	1.0770	1.0413	1.0140	0.9821
USD/JPY	93.81	91.24	88.39	86.45	84.16	83.45

**Indices (value at the end of the month) \***

	July 2010	August 2010	September 2010	TREND	Modification	%
DAX	6147.97	5925.22	6229.02	↑	303.80	5.13
FTSE 100	5258.02	5225.22	5548.62	↑	323.40	6.19
Dow Jones	10465.94	10014.72	10788.05	↑	773.33	7.72
Nikkei 225	9537.30	8824.06	9369.35	↑	545.29	6.18

\* Daily close values

Source: Bloomberg.