

**Foreign Exchange and Financial Markets in April 2010**

EUR/USD		1.3581 ↓ 1.3295	USD/MDL		12.2700 ↑ 12.6210
▼ -2.1059%			▲ 2.8606%		
Max.	1.3651 - 14.04.2010		Max.	12.6325 - 21.04.2010	
Min.	1.3163 - 27.04.2010		Min.	12.2500 - 02.04.2010	
GBP/USD		1.5291 ↓ 1.5268	USD/RUB		29.2500 ↓ 29.2260
▼ -0.1504%			▼ -0.0821%		
Max.	1.5500 - 15.04.2010		Max.	29.4150 - 08.04.2010	
Min.	1.5201 - 28.04.2010		Min.	28.9440 - 14.04.2010	
USD/CHF		1.0537 ↑ 1.0773	USD/RON		3.0182 ↑ 3.1008
▲ 2.2397%			▲ 2.7367%		
Max.	1.0882 - 27.04.2010		Max.	3.1410 - 27.04.2010	
Min.	1.0517 - 14.04.2010		Min.	3.0182 - 01.04.2010	
USD/JPY		93.83 ↓ 93.81	USD/UAH		7.9200 - 7.9200
▼ -0.0213%			0.0000%		
Max.	94.58 - 02.04.2010		Max.	7.9600 - 02.04.2010	
Min.	92.15 - 16.04.2010		Min.	7.8900 - 07.04.2010	
Dow Jones*		10927.07 ↑ 11008.61	DAX*		6235.56 ↓ 6135.70
▲ 0.7462%			▼ -1.6015%		
Max.	11205.03 - 26.04.2010		Max.	6332.10 - 26.04.2010	
Min.	10897.52 - 07.04.2010		Min.	6084.34 - 28.04.2010	
Nikkei*		11244.40 ↓ 11057.40	FTSE*		5744.89 ↓ 5553.29
▼ -1.6630%			▼ -3.3351%		
Max.	11339.30 - 05.04.2010		Max.	5825.01 - 15.04.2010	
Min.	10900.68 - 20.04.2010		Min.	5553.29 - 30.04.2010	

Source: Reuters

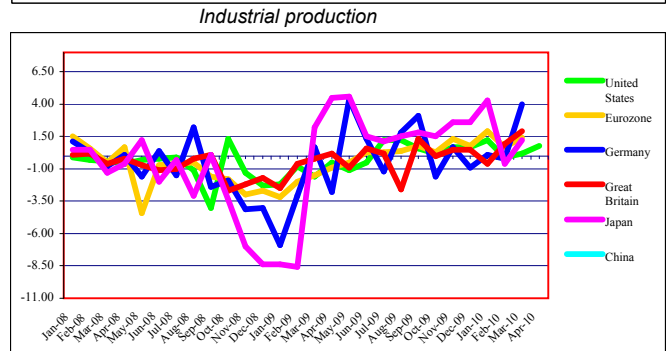
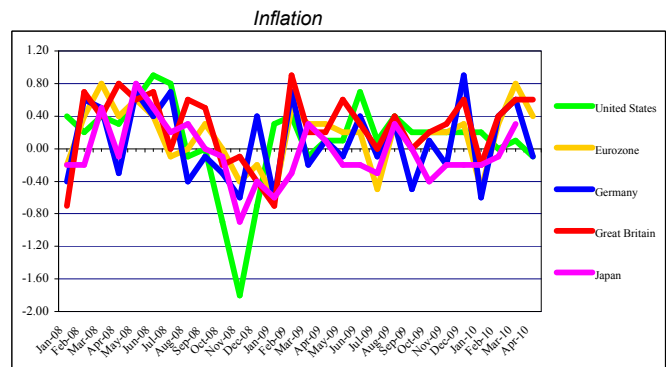
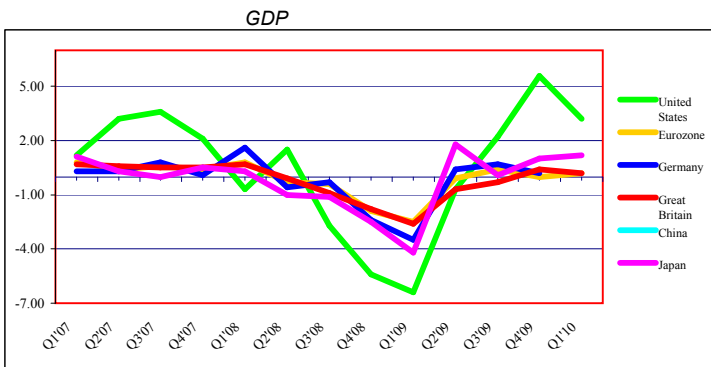
* Daily close values



Foreign Exchange and Financial Markets in April 2010

Economic indicators (%)												
	GDP (modification)			Inflation (modification)			Unemployment rate			Industrial Product (modification)		
	Q3'09	Q4'09	Q1'10	February '10	March '10	April '10	February '10	March '10	April '10	February '10	March '10	April '10
United States *	2.2	5.6	3.2	0.0	0.1	-0.1	9.7	9.7	9.9	-0.1	0.2	0.8
Eurozone	0.4	0.0	0.2	0.3	0.8	0.4	10.0	10.0	n/a	0.7	1.4	n/a
Germany	0.7	0.2	n/a	0.4	0.6	-0.1	7.4	7.3	n/a	-0.2	4.0	n/a
Great Britain	-0.3	0.4	0.2	0.4	0.6	0.6	8.0	8.0	n/a	0.9	1.9	n/a
Japan	0.1	1.0	1.2	-0.1	0.3	n/a	4.9	5.0	n/a	-0.6	1.2	n/a

* United States GDP annual rates



Forex Trends (US Dollars against major currencies at the end of the month)						
	November"2009	December"2009	January"2010	February"2010	March"2010	April"2010
EUR/USD	1.5007	1.4316	1.3862	1.3625	1.3510	1.3295
GBP/USD	1.6452	1.6154	1.6002	1.5247	1.5182	1.5268
USD/CHF	1.0049	1.0355	1.0604	1.0734	1.0535	1.0773
USD/JPY	86.34	92.90	90.30	88.85	93.46	93.81

Indices (value at the end of the month) *						
	February"2010	March"2010	April"2010	TREND	Modification	%
DAX	5598.46	6153.55	6135.70	↓	-17.85	-0.29
FTSE 100	5354.52	5679.64	5553.29	↓	-126.35	-2.22
Dow Jones	10325.26	10856.63	11008.61	↑	151.98	1.40
Nikkei 225	10126.03	11089.94	11057.40	↓	-32.54	-0.29

* Daily close values

Source: Bloomberg.